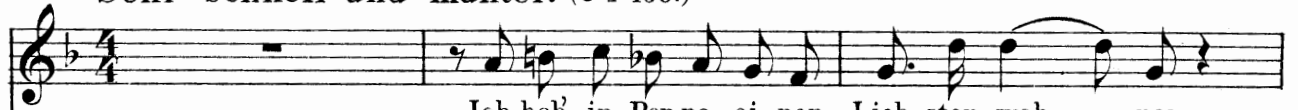


XLVI.

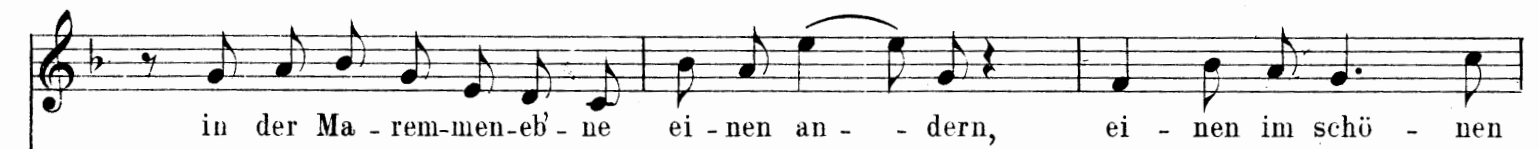
Sehr schnell und munter. (♩ = 160.)

SINGSTIMME.



Ich hab' in Pen-na ei-nen Lieb-sten woh- - nen,

Klavier.



in der Ma - rem-men-eb' - ne ei - nen an - - dern, ei - nen im schö - nen



Ha - fen von An-co - na, zum Vierten muss ich nach Vi - ter-bo wandern; Ein



And - rer wohnt in Ca-sen-ti-no dort, der Näch - ste lebt mit mir am selben Ort, —



und wie-der ei-nen hab ich in Ma - gio - - ne,

f *ff* *p*

Detailed description: This system contains the first line of music. The vocal line is on a single staff with a treble clef and a key signature of one flat. The lyrics are "und wie-der ei-nen hab ich in Ma - gio - - ne,". The piano accompaniment consists of two staves (treble and bass clefs). It begins with a forte (*f*) dynamic, followed by fortissimo (*ff*), and then piano (*p*). The piano part features a complex texture with many chords and moving lines.

vier in La Fratta, zehn — in Castig-lio - - ne.

f *ff* *sf* *ff feurig* *frei* *a tempo*

Detailed description: This system contains the second line of music. The vocal line continues with the lyrics "vier in La Fratta, zehn — in Castig-lio - - ne." The piano accompaniment continues with dynamics *f*, *ff*, *sf*, and *ff feurig*. The tempo marking *a tempo* is placed above the vocal line. The word *frei* is written above a specific note in the vocal line. The piano part continues with a dense, rhythmic accompaniment.

Detailed description: This system shows the piano accompaniment for the third system. It features a treble clef staff with a melodic line and a bass clef staff with a harmonic accompaniment. The music is in a minor key and has a complex, rhythmic texture.

ff

Detailed description: This system shows the piano accompaniment for the fourth system. It features a treble clef staff with a melodic line and a bass clef staff with a harmonic accompaniment. The music is in a minor key and has a complex, rhythmic texture. The dynamic *ff* is indicated. There are also some triplets and other rhythmic markings.